

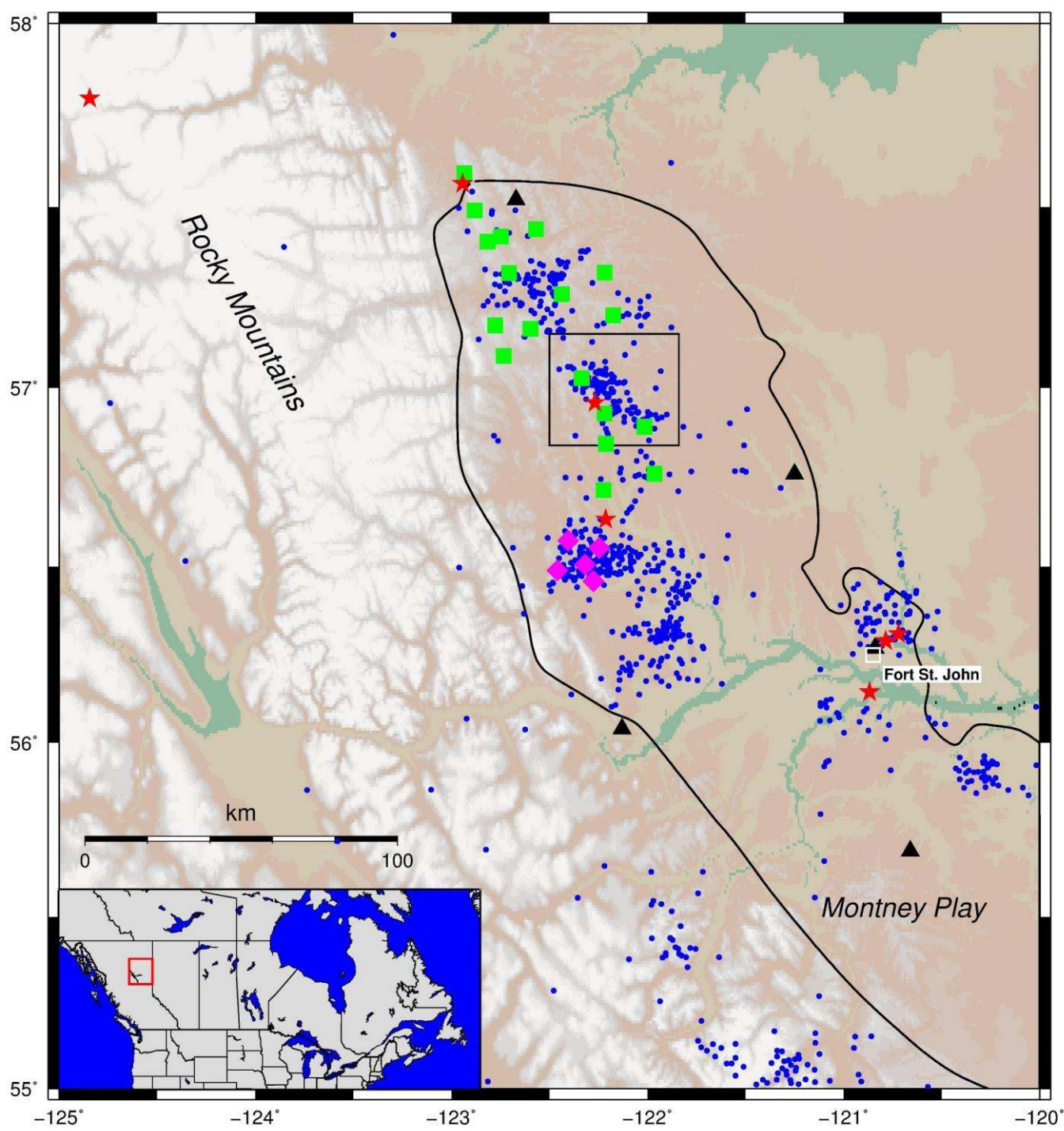
Induced Seismicity in NE BC: an Update

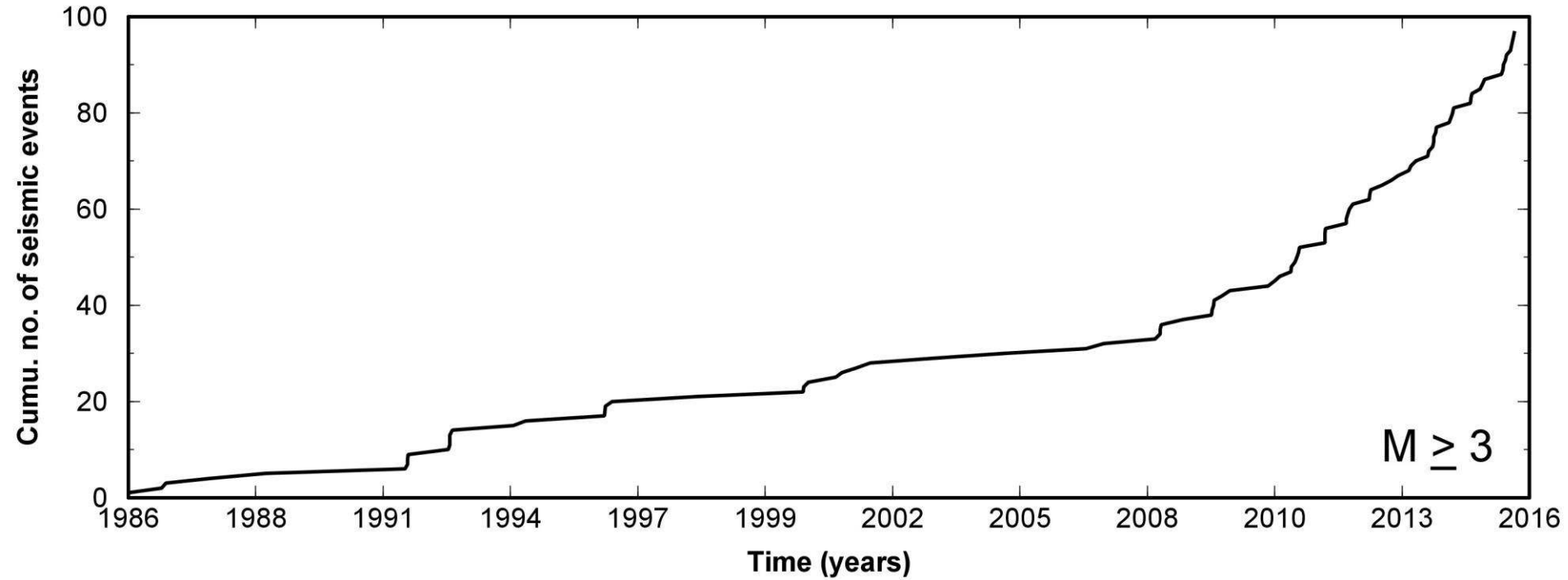
Ali Mahani, Ph.D., P.Geo.

Ryan Schultz, Honn Kao, Jeff Johnson,
and Carlos Salas

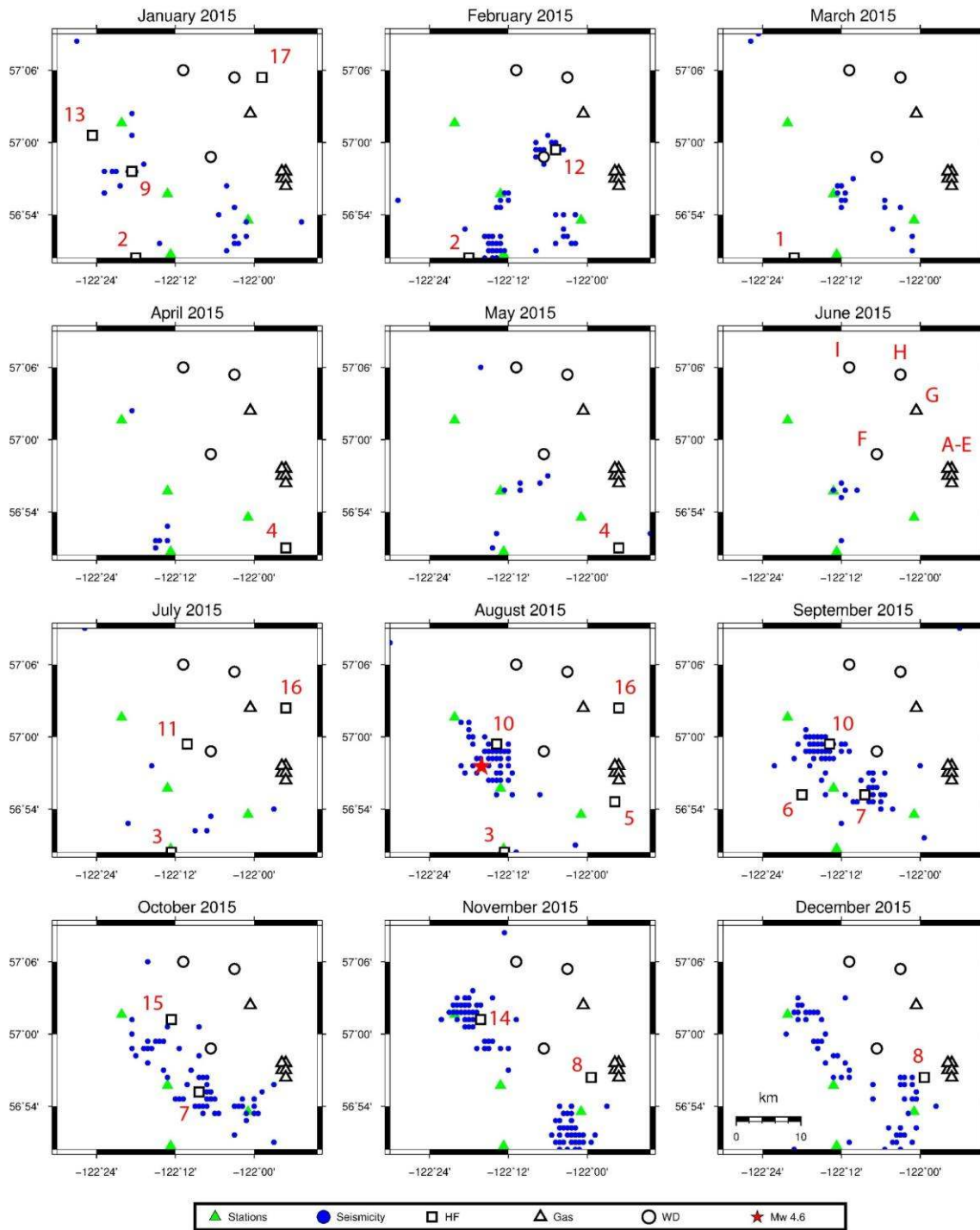
October 27, 2016

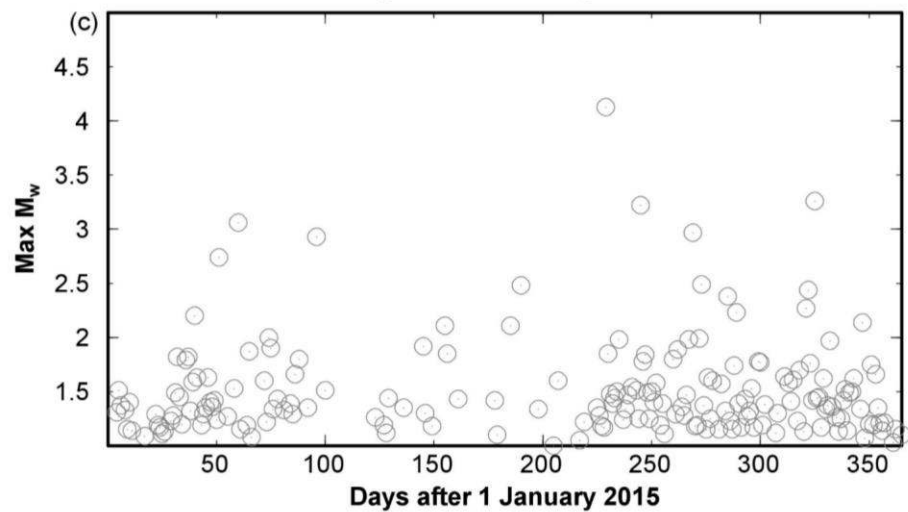
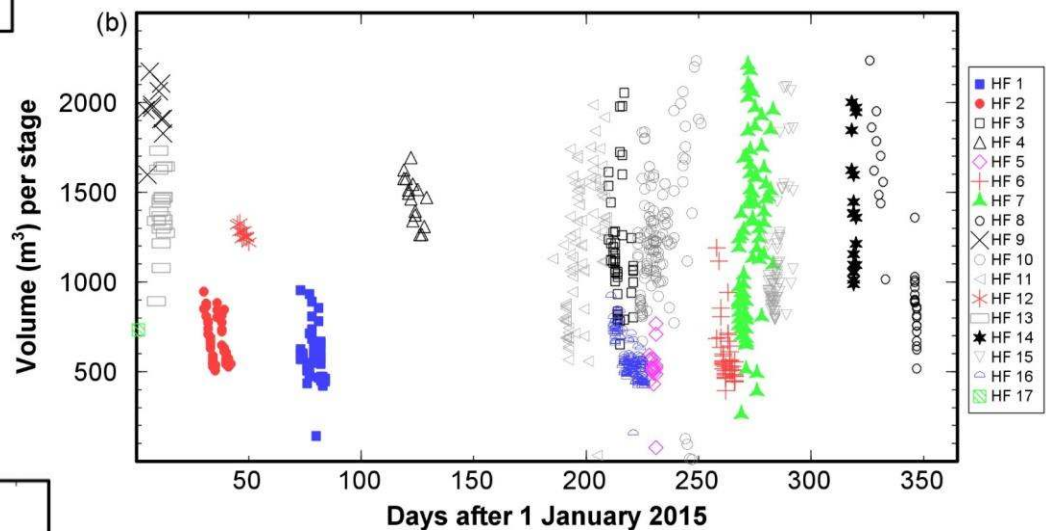
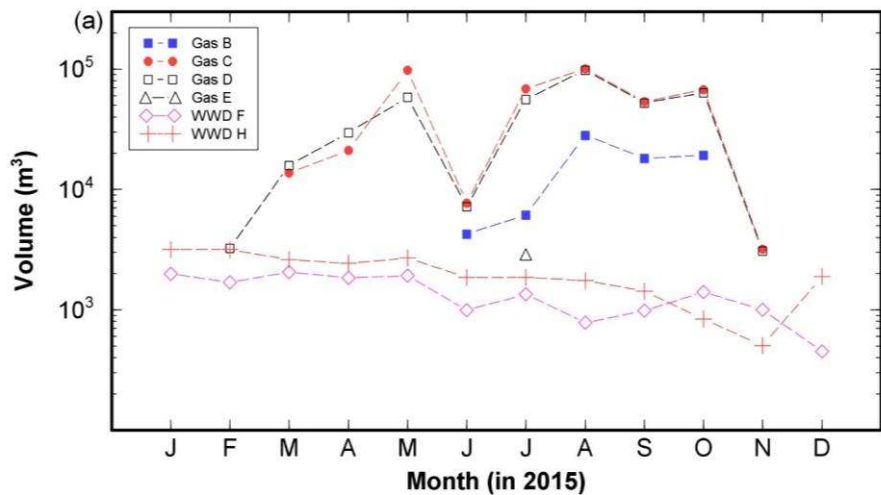
Canadian Induced Seismicity Collaboration Workshop

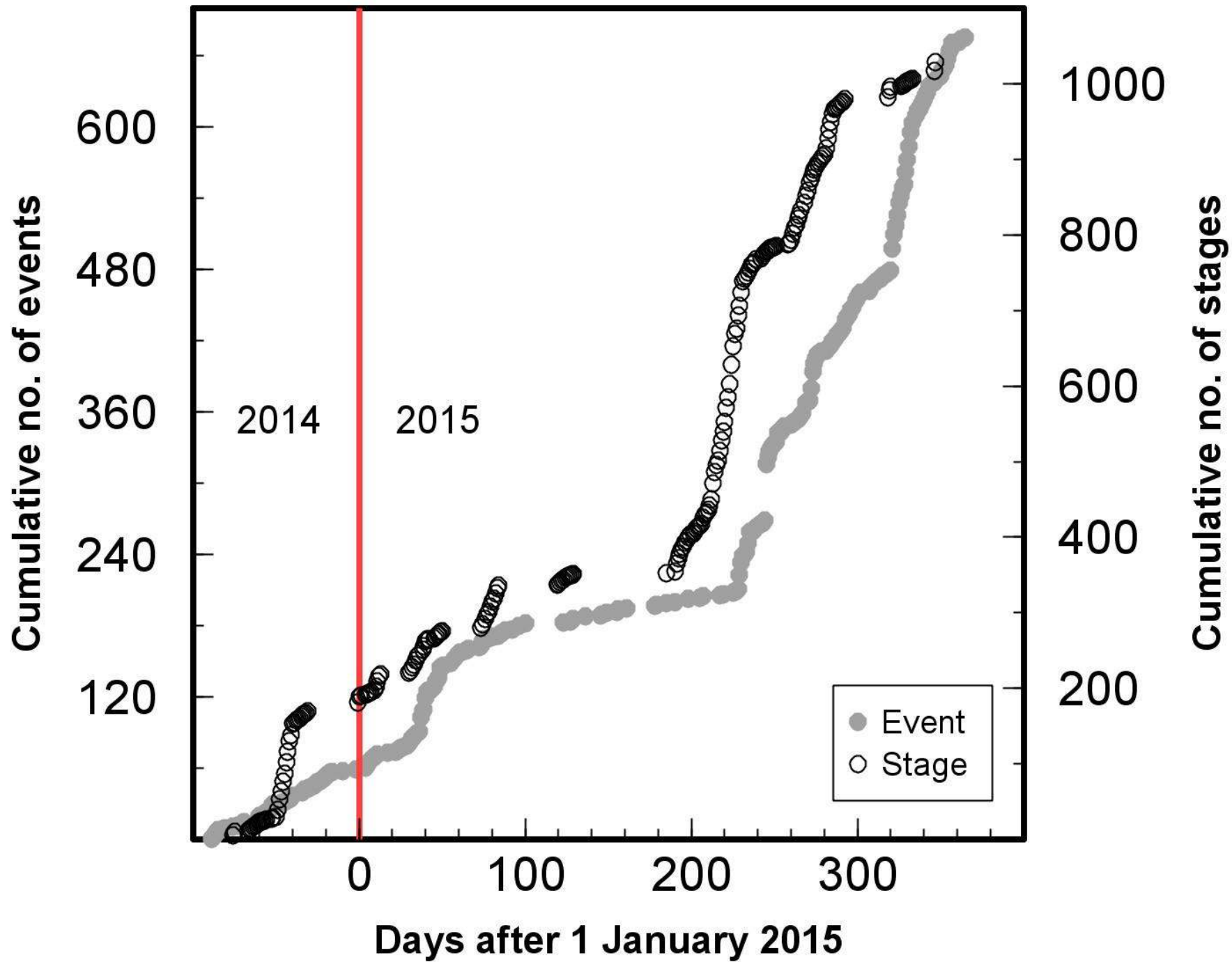


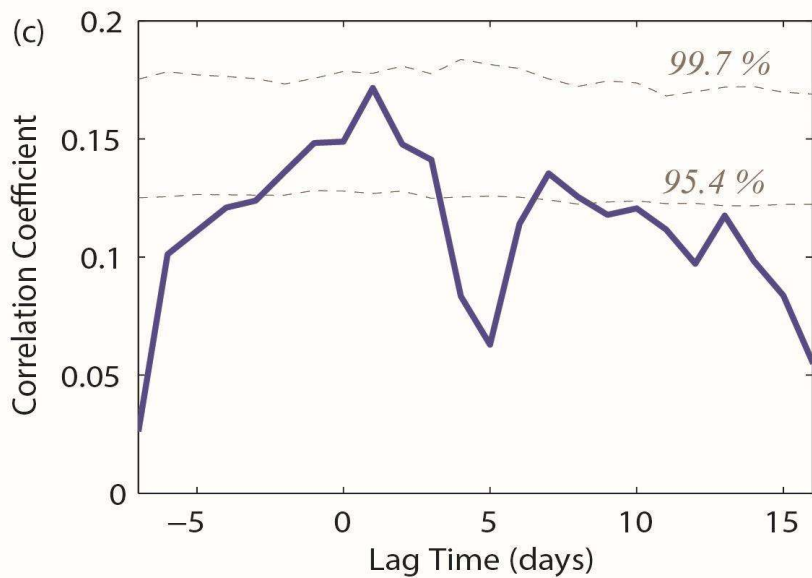
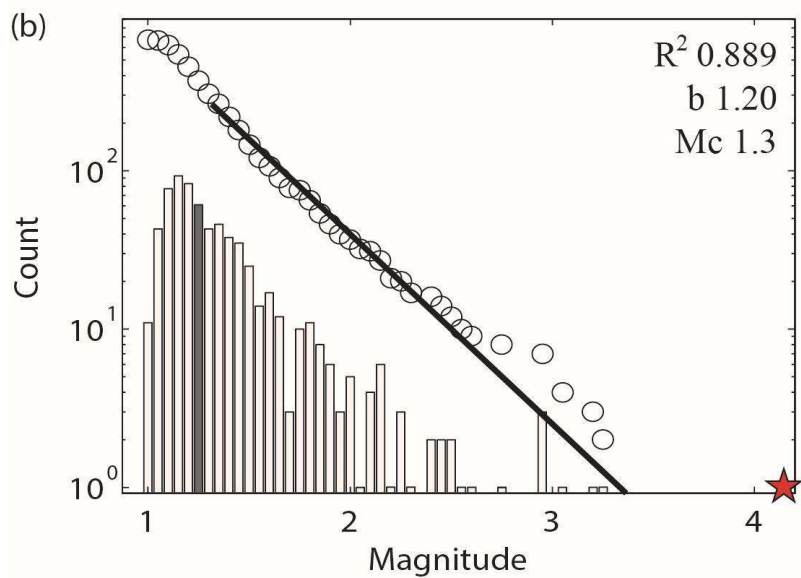
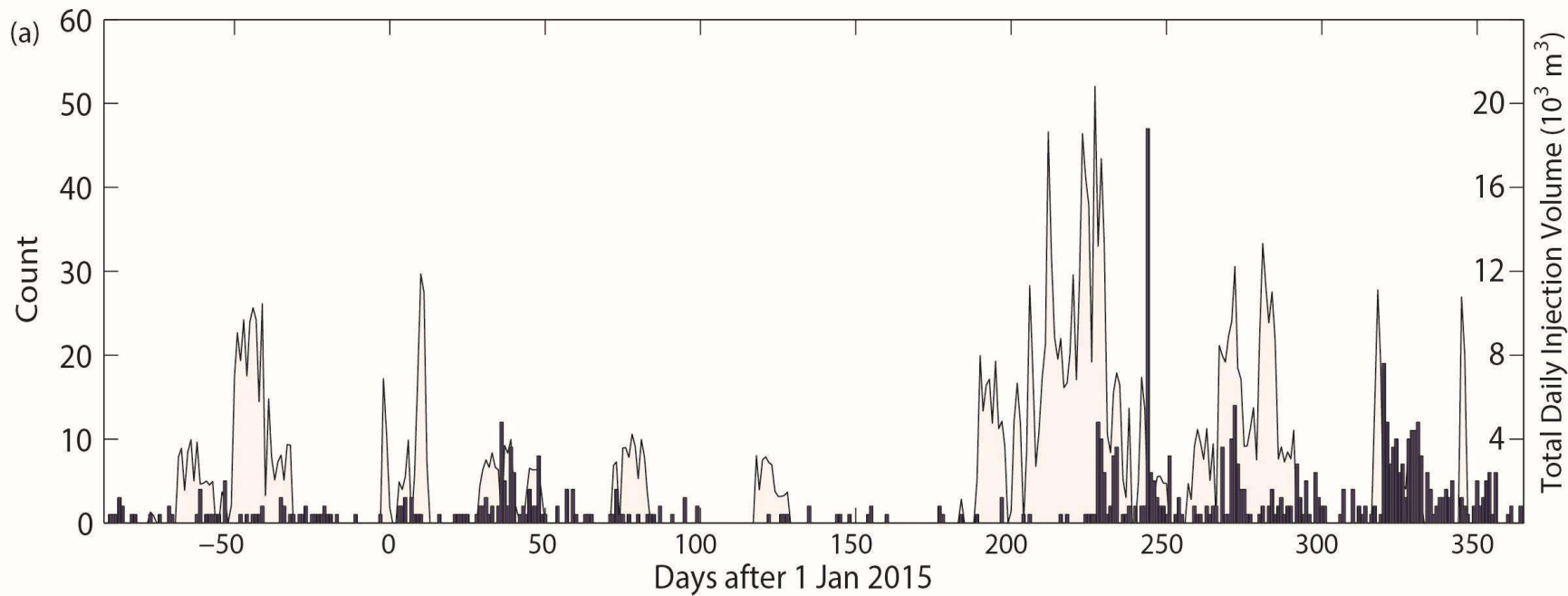


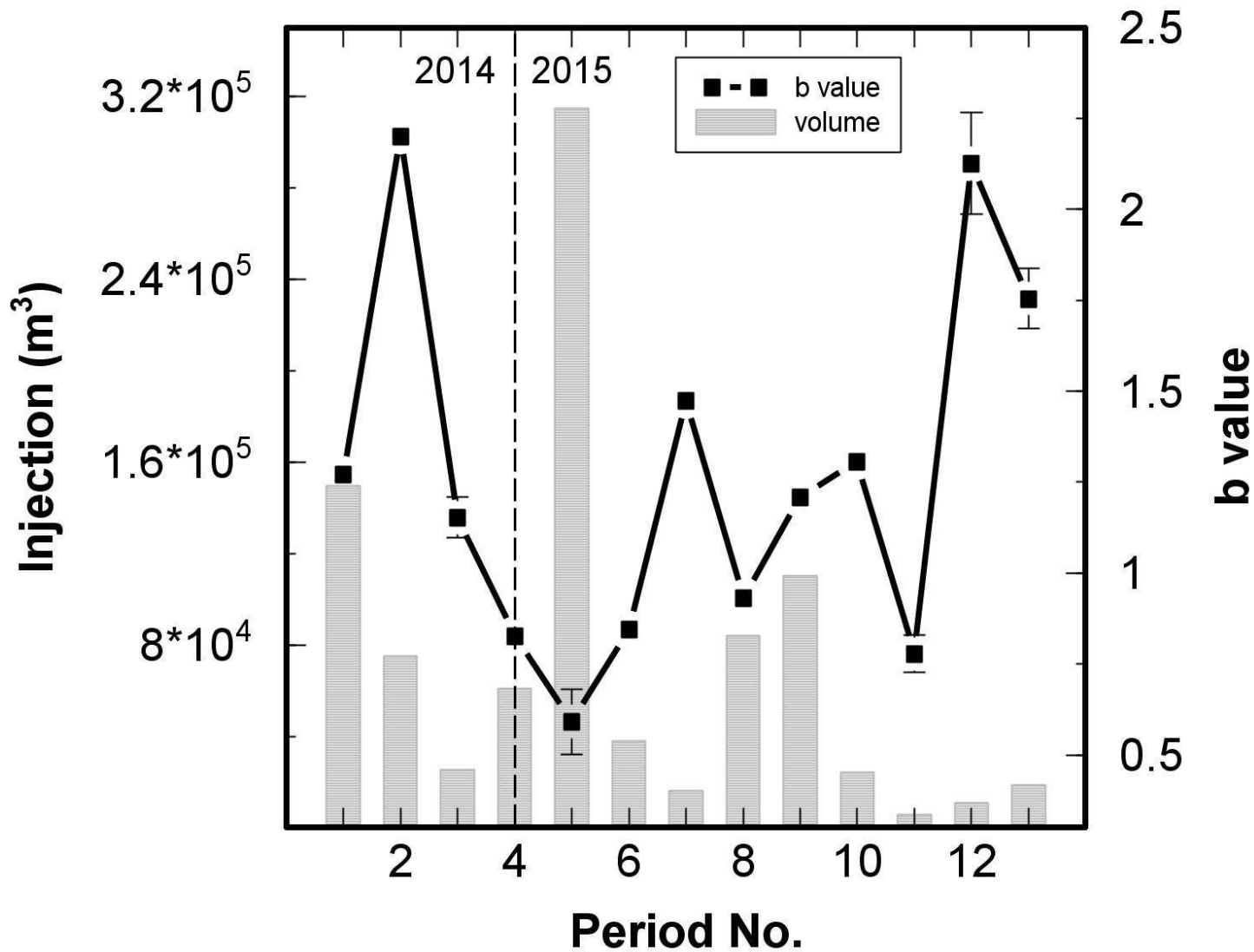
The number of M3+ events have increased by a factor of ~ 3 from 33 in 2008 to 97 in 2015



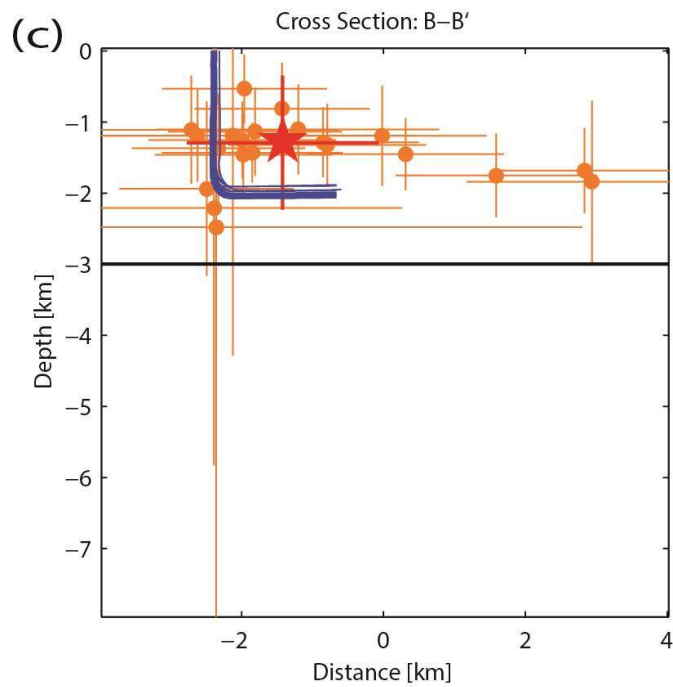
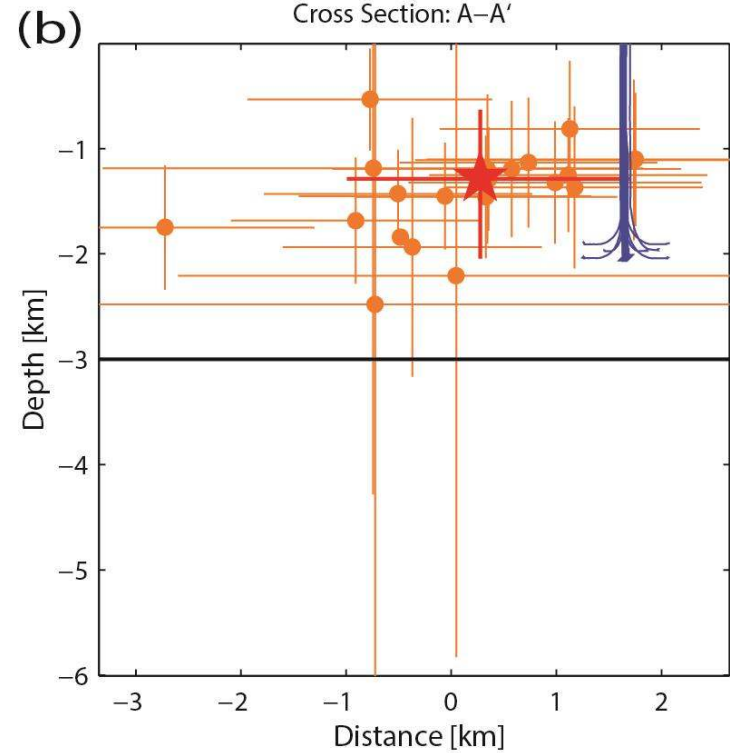
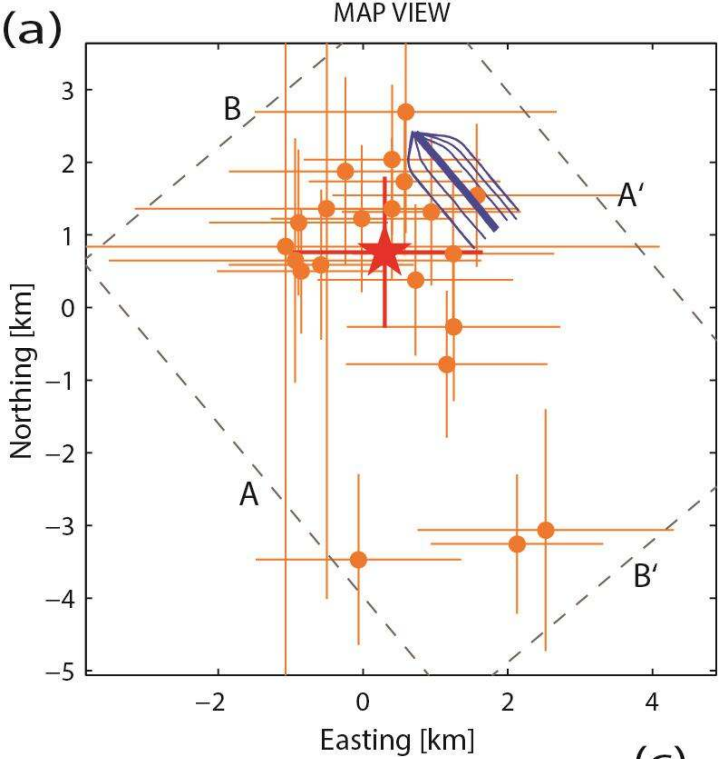








- Periods
- 1) 3 Oct to 8 Dec
 - 2) 9 Dec to 6 Feb
 - 3) 6 Feb to 27 Feb
 - 4) 27 Feb to 9 July
 - 5) 17 July to 22 Aug
 - 6) 23 Aug to 2 Sep
 - 7) 2 Sep to 17 Sep
 - 8) 18 Sep to 1 Oct
 - 9) 1 Oct to 26 Oct
 - 10) 26 Oct to 18 Nov
 - 11) 18 Nov to 24 Nov
 - 12) 24 Nov to 29 Nov
 - 13) 29 Nov to 18 Dec



2015/08/17 20:15:0.3 (UT)

Epicenter: 57.01 -122.15

Depth: 4 km Mw: 4.55

Mo: 8.343e+15 Nt-m

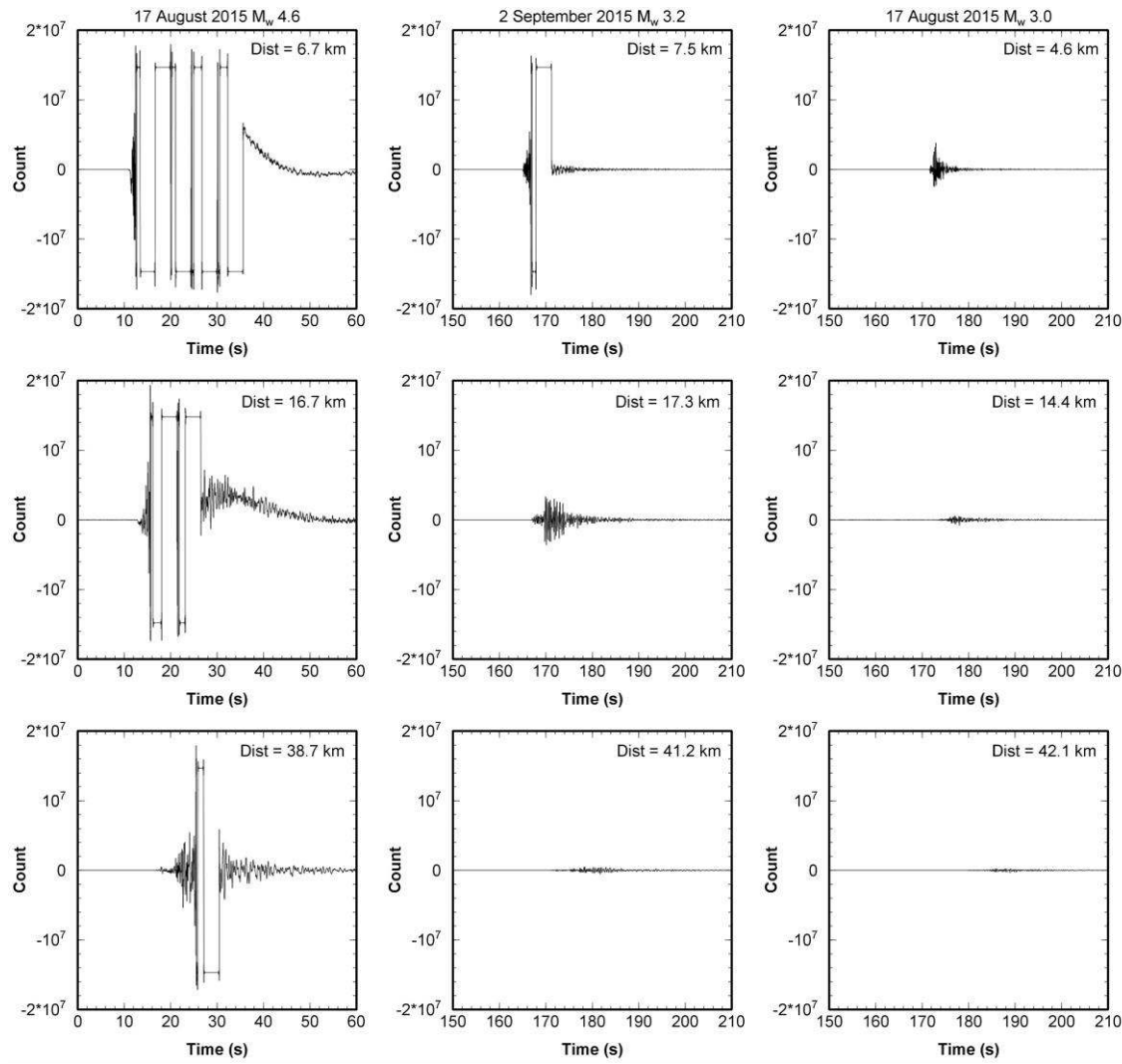
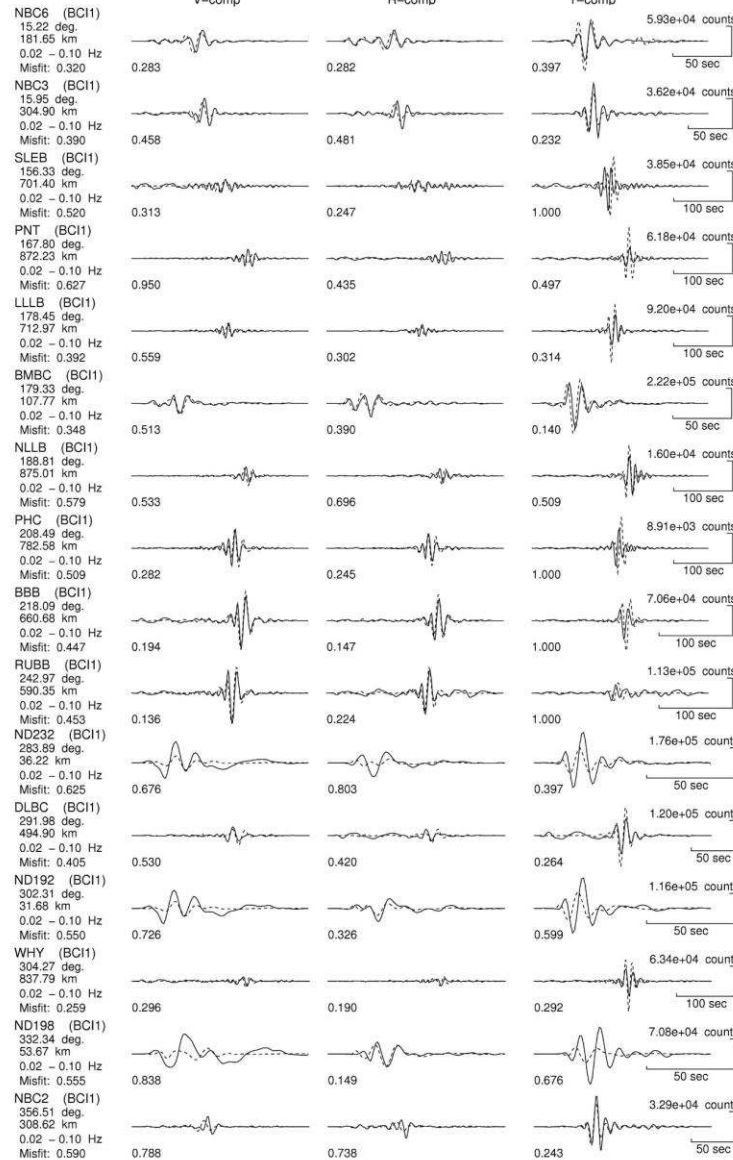
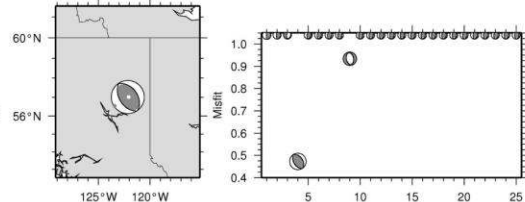
Best double couple solutions

FP1: 323.41 42.01 86.74

FP2: 147.80 48.07 92.94

Iso.= -4.0 % CLVD= 9.3 %

Misfit= 0.473



Source Time Function: 1.00 1.00 1.00

